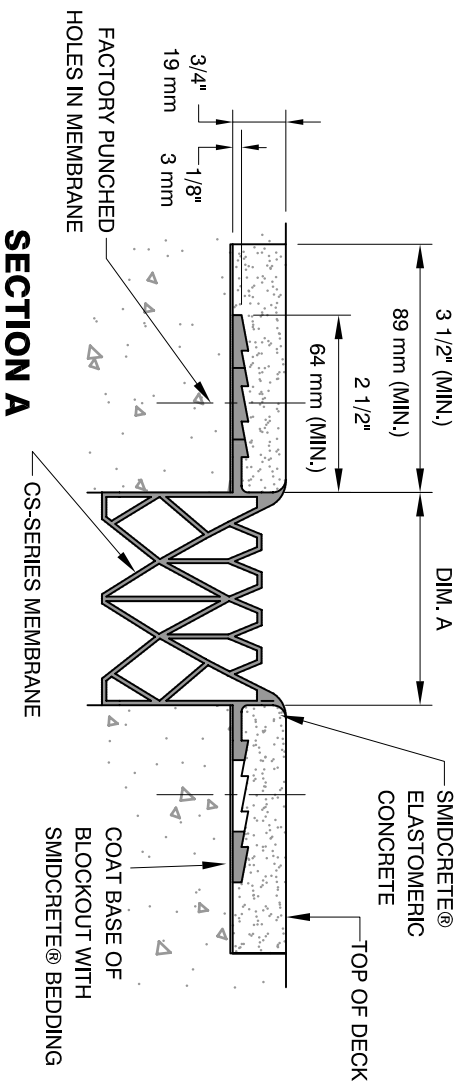


**PLAN @ COLUMN**

MODEL	MOVEMENT	NOMINAL A	MIN. A.	MAX. A.
<b>CS-250</b>	<b>1 1/2</b> (38)	<b>1 1/2</b> (38)	<b>1</b> (25)	<b>2 1/2</b> (64)
<b>CS-325</b>	<b>2</b> (51)	<b>2</b> (51)	<b>1 1/4</b> (32)	<b>3 1/4</b> (83)
<b>CS-400</b>	<b>2 1/2</b> (64)	<b>2 1/2</b> (64)	<b>1 1/2</b> (38)	<b>4</b> (102)
<b>CS-500</b>	<b>3 1/4</b> (83)	<b>3</b> (76)	<b>1 3/4</b> (44)	<b>5</b> (127)
<b>CS-600</b>	<b>3 7/8</b> (98)	<b>3 1/2</b> (89)	<b>2 1/8</b> (54)	<b>6</b> (152)

**BOLD NUMBERS ARE SHOWN IN INCHES**  
**LIGHT NUMBERS IN ( ) ARE MILLIMETERS**



**SECTION B**

COAT BASE OF BLOCKOUT WITH SMIDCRETE® BEDDING  
 BEND UP FLAP OF MEMBRANE (DO NOT CUT)

**CS-SERIES MEMBRANE SYSTEM**  
**DIRECTIONAL CHANGE AT COLUMN/WALL**  
**WITH FASTENING BAR RECESS**

Title: CS-SERIES MEMBRANE SYSTEM  
 Date: JUL '05  
 Scale: NTS  
 Drawn By: WK  
 Checked By: CS  
 Dwg No: TD-CS-07

**REVISIONS**

No.	Description	By	Date
1.	REVISED MEMBRANE SECTION	CS	JULY 05

The information contained herein is the proprietary property of SMID SYSTEMS INC. No portion of it may be reproduced by any means or used in any form except for the purpose for which it was furnished. All rights of design and invention are hereby reserved.



WEB: WWW.SMID.CA E-MAIL: INFO@SMID.CA